

HGP Open Part Number	Schematic Drawing #	Approx Weight (LBS)
HGP0050AW0S000#	29597-S	109
HGP0050AW0C000#	29597	114
HGP0050AW0C*00#	29597-PQ	115

HGP Part Number	HorsePower (HP)	kVar	Maximum Amps (A)	Harmonic	Voltage (V)	Hz.	Phase
HGP0050AW----	50	15	65	5th	480	60	3

HGP Type 1 Part Number	Schematic Drawing #	Approx Weight (LBS)
HGP0050AW1S000#	29597-S	147
HGP0050AW1C000#	29597	152
HGP0050AW1C*00#	29597-PQ	153

***=Communication Option**
0= No Connectivity
1= PQconnect w/Modbus RTU over RS485
2= PQconnect w/EtherNET

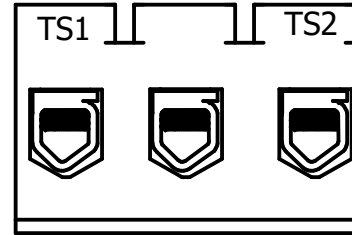
#=Mechanical Option
0= No Option
V= Vibration Pads
T=Thermal Switches

Note: For Torque Information See IOM Manual

Customer Connections.
 L1, T1, L2, T2, L3, T3
 Wire Range: 1 AWG to 22 AWG.

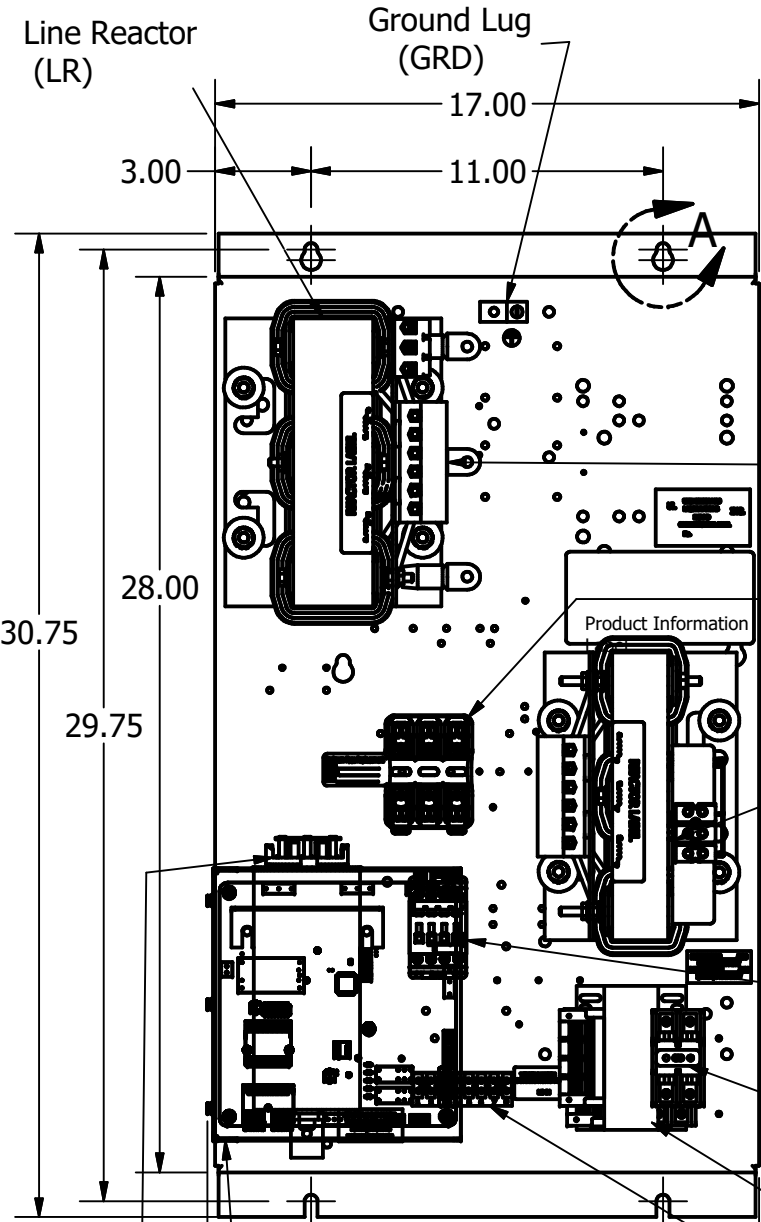
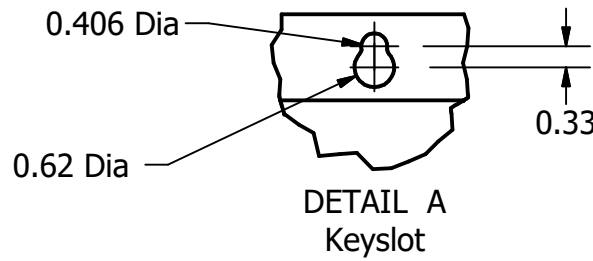
Ground Lug
 Wire Range: 1/0 to 14 AWG.

Thermal Switch, Terminal Block (Optional) Located on Inductors

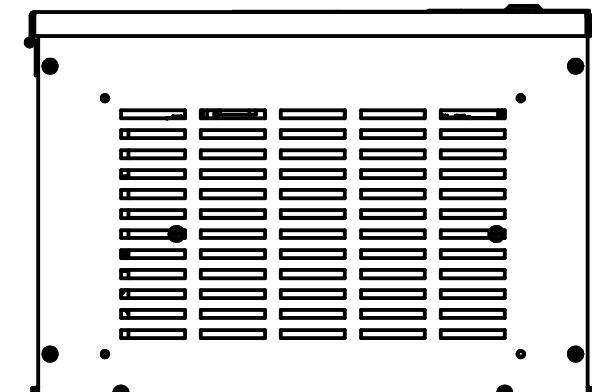
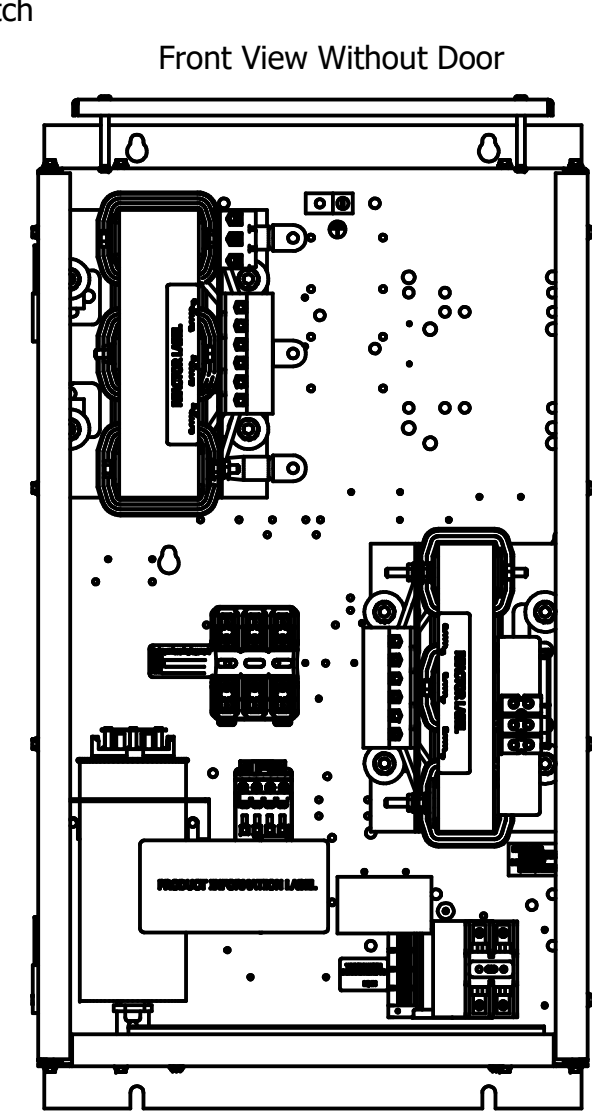
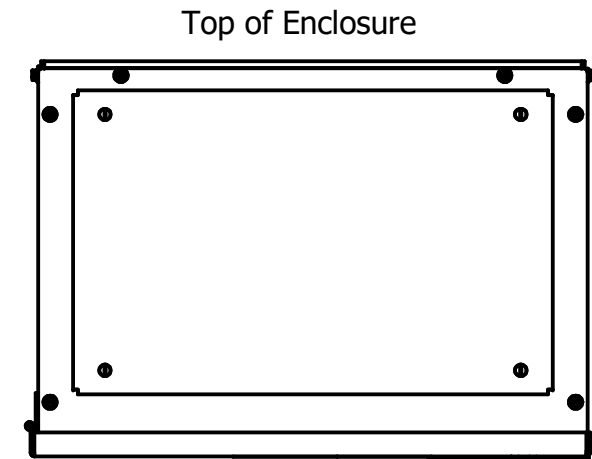
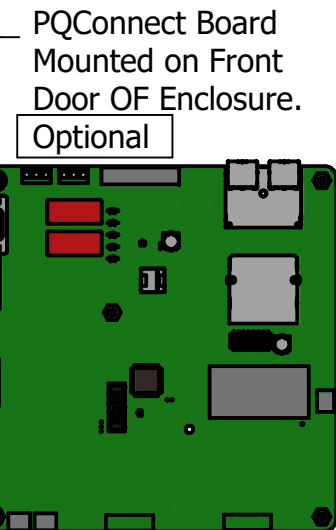
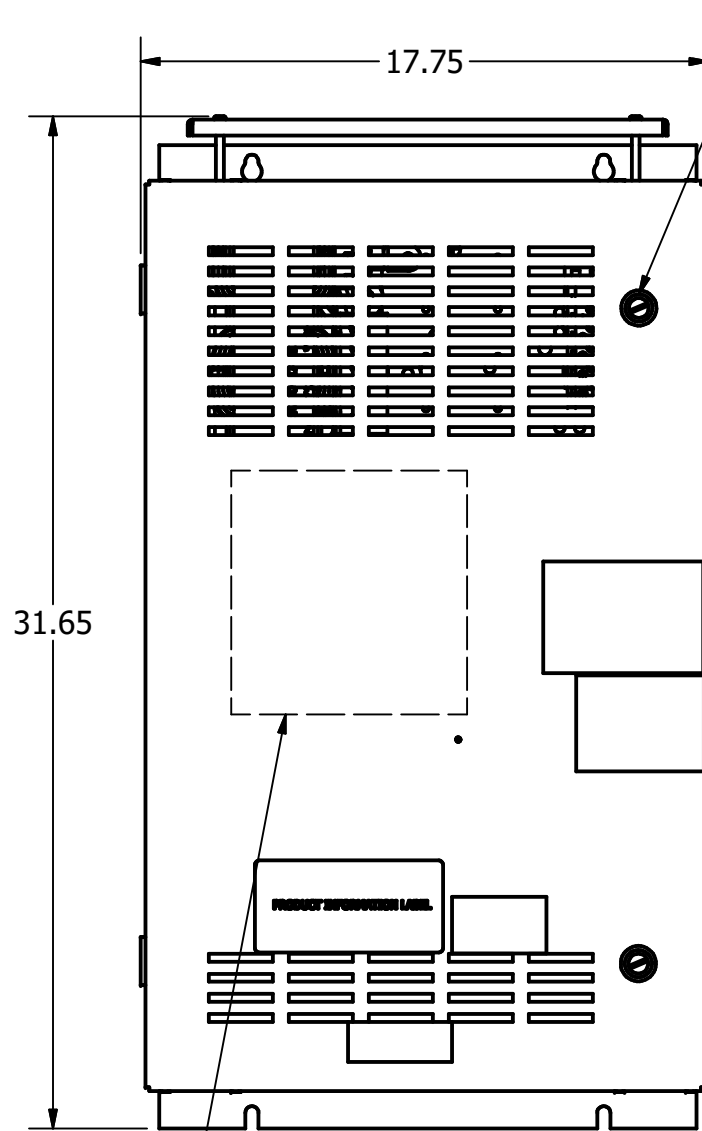
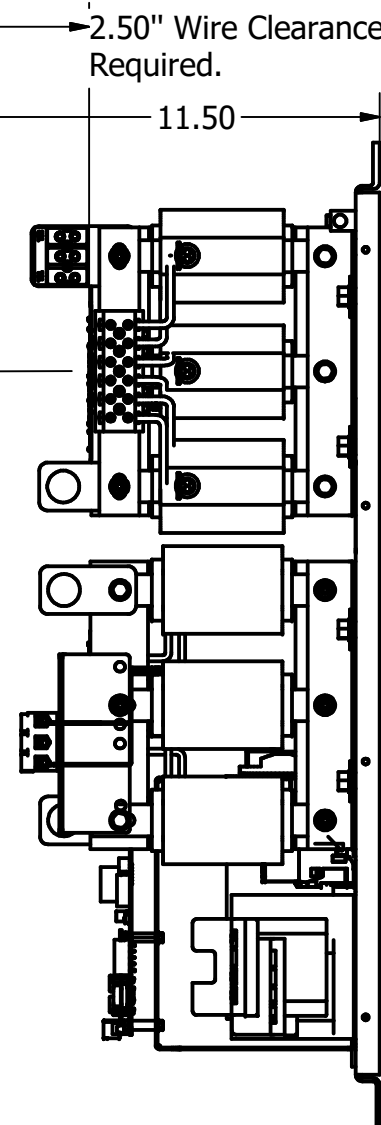


Wire Range: 18 AWG To 4 AWG.
 Torque: 20 LB-IN (2.3 Nm)

Switch Opens on Temperature Rise
 Contact Rating: 6A @ 120 VAC, Resistive
 Contact Rating: 5A @ 120 VAC, Inductive

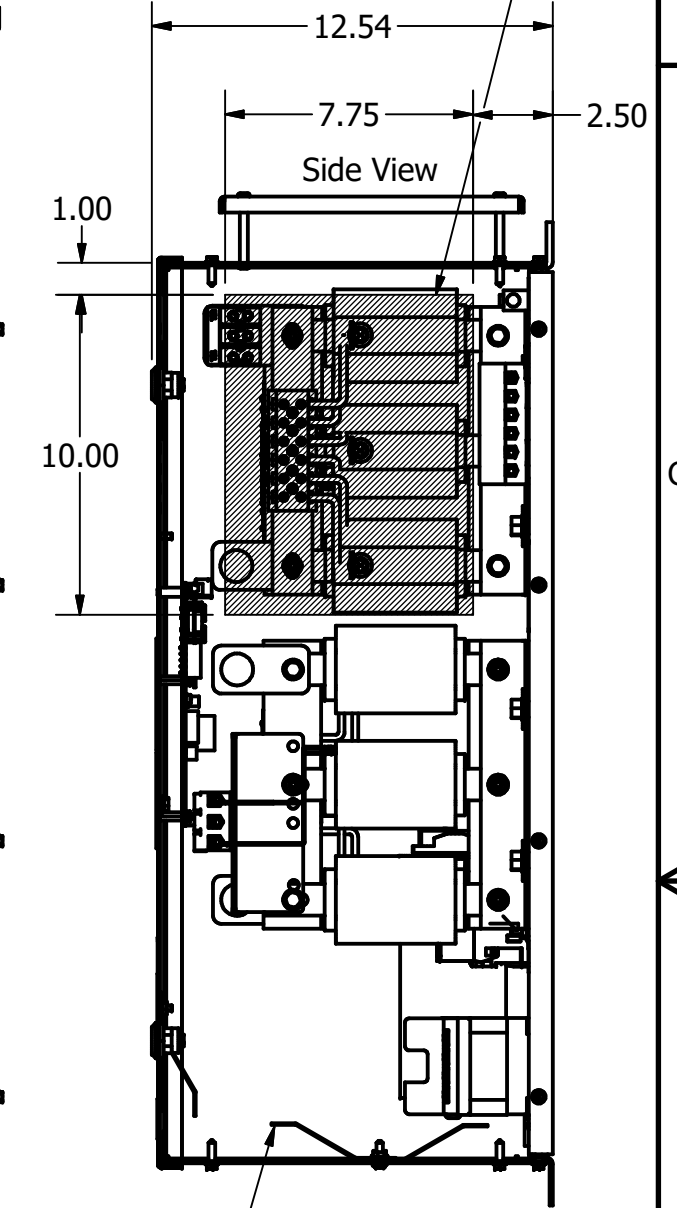


Customer Wire Entry And Exit Location.
 Trap Fusing FU1, FU2, FU3
 Trap Reactor (TR)
 Contactor (CNT) Optional
 Transformer Fusing FU4, FU5
 Transformer (XFMR)
 Terminal Block (TB)
 Location When Supplied



***=Communication Option**
#=Mechanical Option

Suggested Area, For Customer Wire Entry And Exit Location.



UL Required Shields 3 Places.

Note: Customer is responsible for proper cooling of filter components on open panels. Capacitors Maximum Ambient 50°C.

Customer Is Responsible For Installation to Meet All National And Local Electrical Codes.

Material(s) Shall be RoHS Compliant

Components	HGP0050AW----		
	0S000#/1S000#	0C000#/1C000#	0C*00#/1C*00#
Line Reactor (LR)	X	X	X
Trap Reactor (TR)	X	X	X
Capacitor (Cap)	X	X	X
Trap Fusing, FU1, FU2, FU3	X	X	X
Contactor (CNT)		X	X
Transformer (XFMR)		X	X
XFMR Fusing, FU4, FU5		X	X
PQConnect Board			X

THE INFORMATION AND DESIGNS CONTAINED IN THIS DRAWING ARE CONFIDENTIAL AND THE PROPRIETARY PROPERTY OF ALLIED MOTION TECHNOLOGIES INC. AND ITS SUBSIDIARIES. NEITHER THIS DESIGN NOR ANY INFORMATION CONTAINED IN THIS DRAWING MAY BE REPRODUCED OR DISCLOSED TO OTHERS WITHOUT THE EXPRESS WRITTEN CONSENT OF ALLIED MOTION TECHNOLOGIES INC. AND ITS SUBSIDIARIES.

NO	REVISION	DATE	BY	ANGULAR ± 1°
H	6481 Add Options	11/08/23	JRN	TOLERANCES (EXCEPT AS NOTED) DECIMAL
G	6125 update Weights	12/13/2022	DSW	.XX ± .25 .XXX ± .10
F	5599-1, CNT GE to ABB	6/1/2021	DSW	FRACTIONAL ± 1/32
E	5321 Component Chart Updated	07/23/20	JRN	
D	4760, ADD HARNESS	5/28/19	DSW	
C	PQConnect Board Added.	6/14/18	DSW	

TCL
 An Allied Motion Company
 W132N10611 Grant Drive
 Germantown, WI 53022
 © 2023 TCL, LLC
 HarmonicGuard Passive
 HGP, 50HP, 480/3/60, Open and Type 1.
 105484DG
 SHT 1 OF 1